



# Best Version Media®



### PUBLICATION TEAM

**PUBLISHER** Jessie Riley  
**CONTENT COORDINATOR**  
 Jenna Caputo  
**DESIGNER** Kelly Anderson  
**CONTRIBUTING PHOTOGRAPHERS**  
 Niki Rossi Photography  
**CONTRIBUTORS**  
 John L. Scherer, Clifton Park Historian  
 Rebecca Carman, Shenedehowa

Central Schools  
 Ellis Medicine  
 Jenna Caputo, Silverpen Productions  
 Select Sotheby's International Realty  
 Tara Morgan, Behan Communications  
 JP Komorny, CETS, Core Engineering Tax Services  
 Janine Cammarata, Nick's Fight to be Healed Foundation

### ADVERTISING

**Contact:** Jessie Riley **Phone:** (917) 455-2461  
**Email:** jriley@bestversionmedia.com

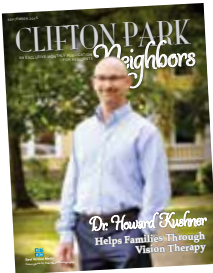
### COMMUNITY SUBMISSIONS

Have feedback? New ideas? We would be happy to hear from you! Please contact Jenna Caputo at jcaputo@bestversionmedia.com for information on how to submit ideas, articles, updates, reminders, events, high-resolution photos and more. We will do our best to include as much community information as we can within our space limitations.

### MAGAZINE DEADLINES

Please submit your content by the 10th of each month. Clifton Park Living will usually arrive in your mailbox within the first week of every month. Dates may vary depending on the post office.

Any content, resident submissions, guest columns, advertisements and editorials are not necessarily endorsed by or represent the views of Best Version Media (BVM) or any municipality, homeowners associations, businesses or organizations that this publication serves. BVM is not responsible for the reliability, suitability or timeliness of any content submitted. All content submitted is done so at the sole discretion of the submitting party. © 2015 Best Version Media. All rights reserved.



© 2015 Best Version Media

**ON THE COVER**  
 Dr. Howard Kushner

**CORRECTION:** The August 2015 issue listed our feature story as Clifton Park EMT. This should have read Clifton Park & Halfmoon EMS. EMS stands for Emergency Medical Service, whereas EMT stands for Emergency Medical Technician. CPHM staff is mostly made up of paramedics, but also has many EMT on staff as well. We apologize for the error!

## Dear CLIFTON PARK RESIDENTS

For many families, September is a time of change. A new school year routine begins as the kids adapt to a new teacher, new class, new bus, new friends, new expectations, even new notebooks. Life gets a bit hectic as everyone in the household settles into the new routine.

While change can naturally sometimes be unsettling, change is also good. It offers a chance for never before thought of opportunities and the ability to spread our wings in a new way.

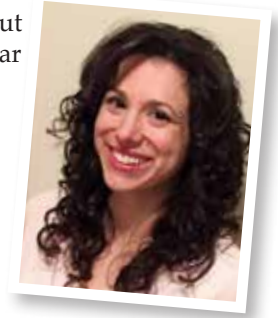
You may have noticed a change on the cover of our magazine this month. *Clifton Park Living* will now be called *Clifton Park Neighbors*. We found that our publication was getting confused with some other magazines in the Capital District, so we have changed the name to try to avoid future confusion. But don't worry – the magazine will still contain all of your favorite features and will continue to highlight our Clifton Park residents as always. Speaking of which, we want to hear your stories and receive your submissions for resident features, local non-profits, original artwork and photography, information about your own publications and projects, original recipes, and star students.

Change is good. New name, same great community magazine!

Happy September!

*Jenna Caputo*

CONTENT COORDINATOR



## STAR STUDENTS

# Skaters Skating for Memory

By Agnas Gault

Monica Gault, Junior MIF and Novice Freestyle Figure Skater with the Hudson Mohawk Figure Skating Club, organizes and participates in Skate for Memory for local memory care center. Monica is also a level 5 NYSSMA cellist. She began playing cello for her friends at the Beacon Pointe Memory Care Center about three and a half years ago through St. Georges' church community service program in Clifton Park – an activity she continues to participate in every other Sunday. It is through this event that the idea of Skating for Memory was born. In three years, Justin Morrow and Elektra have been a

consistent addition to the program with phenomenal skating every time.

Isabella Gould and Chelsey Wertans joined this year's event, adding to the merriment. As always, the main goal is to ensure that for an hour in the morning, on a weekday, friends from Beacon Pointe will enjoy a quality time with their local skaters. A small snack and cello music follows in the lobby after the event. We are looking forward to another fun event next year! Special thanks to Scott, the proprietor of the Clifton Park Ice Arena for donating the ice two years in a row! ■

### IMPORTANT TOWN PHONE NUMBERS

Town Supervisor *Phil Barrett*.....371-6651  
 Town Board Members.....371-6651  
 Animal Control Officer.....371-6756  
 Town Attorney *Tom McCarthy*.....371-6651  
 Assessor *Walter Smead*.....371-6460  
 Building & Development Director  
*Steve Myers*.....371-6702  
 Building & Grounds Director  
*Mike Handerhan*.....371-6651  
 Town Clerk *Pat O'Donnell*.....371-6681

Town Court, 5 Municipal Plaza .....371-6668  
 Community Development Director  
*Barb McHugh*.....371-6651  
 Town Comptroller *Mark Heggen*.....371-6651  
 Storm Water Management Technician  
*Scott Reese*.....371-6054  
 Director of Communications & Tech  
*Dahn Bull*.....371-6651  
 Highway Superintendent  
*Rick Kukuk*.....371-7310

Parks and Recreation Director  
*Myla Kramer*.....371-6667  
 Planning Director *John Scavo*.....371-6054  
 Receiver of Taxes *Lorraine Varley*.....371-5720  
 Director of Safety and Security  
*Lou Pasquarel*.....348-7311  
 Town Security Officers.....369-6651  
 Sewer Director *Mike O'Brien*.....348-7313  
 Transfer Station Supervisor  
*Jeff Vedder*.....371-6669

If the person you wish to reach is not on the list above, please call 371-6651 to speak to a receptionist who will direct your call to the appropriate individual or department. The Town's office buildings are open from Monday through Friday, 9am to 5pm, excluding holidays. The Town Clerk's Office is open until 7pm every Thursday. The Building and Parks and Recreation Departments are open at 8am Monday through Friday.